

DISTRIBUTOR BLOCKS

USER GUIDE

Ref. IDs: 2940, 2941, 2942, 2943, 2944, 2945, 2707, 2708, 2709, 2775, 2777

The Memolub distributor block automatically supplies fixed quantities of pressurized lubricant to each discharge outlet through the continuous operation of internal pistons, and operate cyclically with a continuous lubricant input.

There are two distributor sizes: one double-stack block dedicated to outlets from 2 to 8, one triple-stack dedicated to outlets from 10 to 12 (see dimensions below). Unused outlets are not threaded. Intermediate number of outlets can be reached by bridging vertical or horizontal outlets together, using the corresponding bridges.

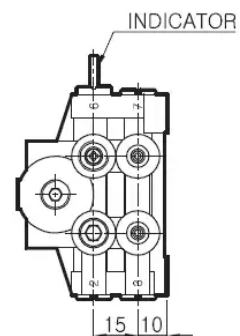
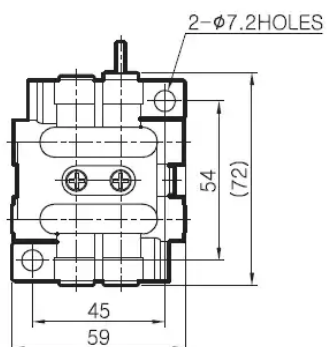
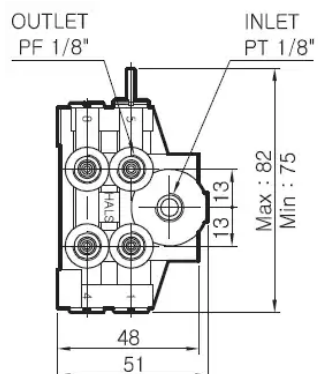
PRECAUTIONS

- When assembling the pipes, if there are extra discharge outlets, never block them with a plug.
- Instead, use a bridge to merge the output of two outlets into one. The pipe connected to this bridge will then have double the dose quantity
- The indicator rod indicates the normal operation, moving back and forth during one cycle.

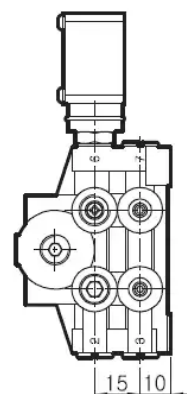
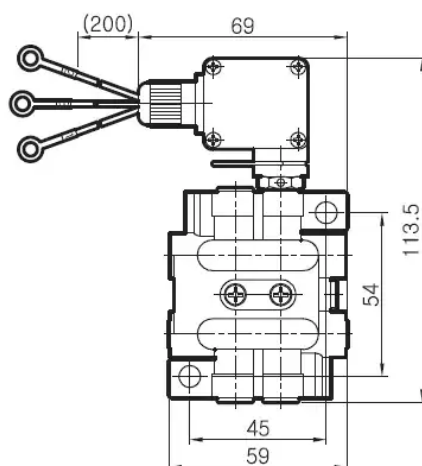
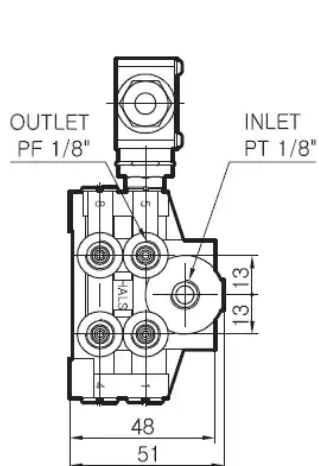
DIMENSIONS

2-10 OUTLETS

Without sensor



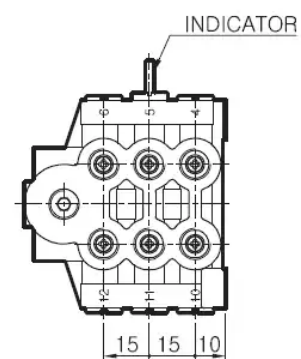
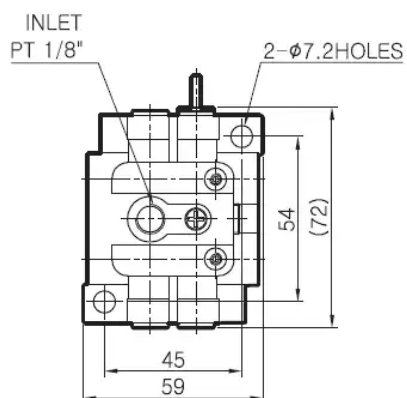
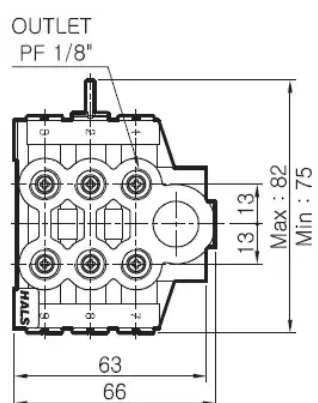
With sensor



DISTRIBUTOR BLOCKS 10-12

10 to 12 outlets

Without sensor



DISTRIBUTOR BLOCKS 10-12

With sensor

