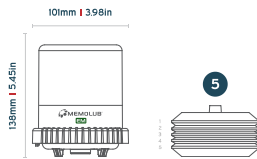




EM MEMOLUB EM SERIES KNOWLEDGE BASE

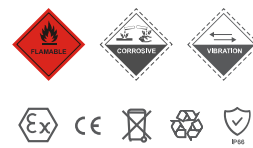
DIMENSIONS

120cc
Grease & Oil Cartridges
120cc | 4oz



PRECAUTIONS

- Do not open the housing: loaded spring
- Hold MEMOLUB down during manual checks
- Leq <70 dB
- Use MEMOLUB only for greasing machinery
- Use only lubricant cartridges and batteries recommended by the manufacturer



INSIDE THE BOX



MEMOLUB® EM Pump



MEMOLUB® Housing Kit



MEMOLUB® EM Memo Kit

SETTINGS

SETTINGS

MEMO COLOR	AV. DAILY OUTPUT	REFILLING FREQUENCY VS. CARTRIDGE CONTENT (120CC)
○	0.15 cc/day	24 months
○	0.30 cc/day	12 months

REMOTE INSTALLATION DISTANCES

TYPE OF INSTALLATION	MAXIMUM DISTANCE
Single point	2m*

*Distance calculated using grease with NLGI2 at 0°C.

SPECIFICATIONS

ELECTRIC SPECIFICATIONS

	MEMOLUB EM
Power Source	Battery
Voltage	4.5V DC (3x1.5V DC AA)
Short circuit protection	Yes
Stroke duration	8 seconds
Minimum stroke interval	48h

OTHERS

	MEMOLUB EM
Operating Temperature	-15°C to 50°C*
Connections	1/4 BSP

MEMOLUB EM	
Lubricants	Oil and Grease (up to NLGI2**)
Maximum stroke pressure	10 bar / 240 PSI

* Batteries + lubricant adapted for low temperatures.

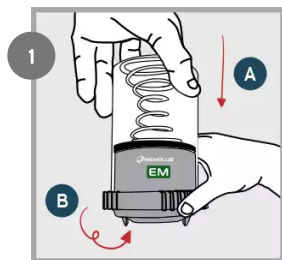
** For higher consistency levels (NGLI) please contact your local distributor.

INSTALLATION GUIDELINES

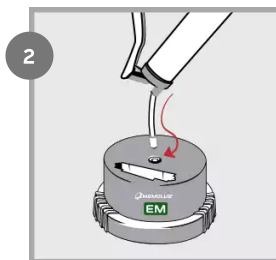
DIRECT INSTALLATION

REMOTE INSTALLATION

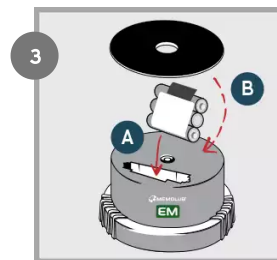
CARTRIDGE REPLACEMENT GUIDELINES



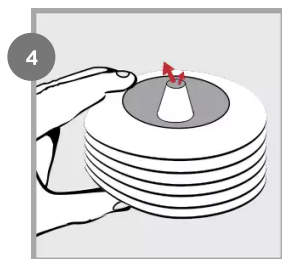
Open (fingers on ribs).



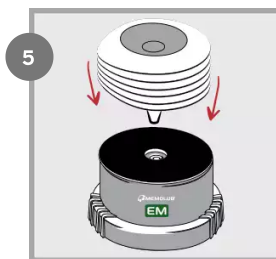
Prime MEMOLUB EM pump.



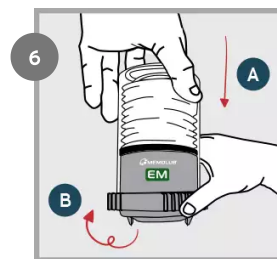
Insert new battery pack and seal. NOTE: the battery seal can be removed for 480cc cartridges.



Squeeze air out of the cartridge.



Replace cartridge on MEMOLUB EM pump.



Close and lock (fingers on ribs).

CHECK FUNCTION

MEMOLUB EM

MEMOLUB EM PLUS

FAQ

How can I test and/or check if MEMOLUB EM is functioning?

You can test and/or check whether MEMOLUB EM is working correctly at anytime by unscrewing MEMOLUB from the MEMO by one turn and screwing it back. MEMOLUB EM will expulse once after being mounted to the MEMO.

If the environment is too noisy, unscrew MEMOLUB EM from its MEMO and push the switch at the bottom of the housing for a few seconds. MEMOLUB EM will then make an expulsion to confirm that electronic, mechanical and batteries are ok.

This operation has to be done with a cartridge inside the MEMOLUB EM

Complete gavage of the pump with the adequate lubricant.

What to do if my MEMOLUB EM automatic lubricator is not functioning?

Make a manual test of MEMOLUB EM by using a MEMO with the MEMOLUB EM

If MEMOLUB EM does not work, check the following:

- Is there a battery pack in the MEMOLUB EM and is it correctly inserted?
- Are the batteries ok? Use another battery pack to double-check.

What to do when there is no lubricant coming out of my MEMOLUB EM?

If MEMOLUB[®] EM does function, but no grease comes out of the automatic lubricator check the following:

- Is there a lubricant cartridge inside the MEMOLUB EM? If not, recharge the unit with a cartridge as described in the installation guidelines.
- Was the spring mounted correctly inside the transparent housing? If not, please mount it again as described in the installation guidelines.
- Is the pump of the MEMOLUB EM primed? If the cartridge of MEMOLUB EM was totally emptied before replacement, some air could have been sucked into the system and the pump would cavitate for a certain number of cycles. Place a grease handgun on the suction valve of the red housing and pump grease through the unit as explained in the installation guidelines

What to do when the lubricant cartridge is not emptied correctly?

If MEMOLUB EM does function but the lubricant cartridge does not empty or not in the predicted timing there might be that of the following issues occurs:

- The piping is clogged: use a handgun to clear the pipes.
- The piping is damaged. Replace the piping.
- Counter pressure at the MEMOLUB[®] EM outlet is higher than 10 bar: please respect the tubing diameters, tubing lengths, and the working temperatures. Also, use fittings with openings larger than 4mm (0.157").

- At working temperature, the base oil viscosity of the grease is higher than 10.000cSt. Please use low temperature lubricants.

What to do when the lubricant does not reach the lubrication point?







MEMOLUB EM does function and empties correctly, however no lubricant is reaching the lubrication point. Possible causes are:

- The piping might be damaged, please check and replace if necessary.
- A fitting is not correctly screwed or sealing is missing, please check and replace or add if necessary.

Does MEMOLUB EM needs specific maintenance?

MEMOLUB does not require any specific maintenance. When used in humid or dusty atmospheres MEMOLUB EM can be cleaned with compressed air or a slightly humid rag. To clean MEMOLUB EM do not use solvents or plunge unit in any liquid. It is also possible to equip your MEMOLUB EM with a protection cover. For additional information, please contact your local MEMOLUB dealer.

REGULATORY INFORMATION

SYMBOL	DESCRIPTION
	This product is compliant with Directives 2006/42/EU (Machinery) and 2014/34/EU (Equipment in potentially explosives atmospheres - classification II 3 G for gases, II 3 D for dusts). The relevant Declaration of Conformity is available here [https://memolub.eu/assets/uploads/Support/EM/DoC-CE-EM-2023.pdf].
	This product is compliant with UK regulations 2008 No. 1597 (Supply of Machinery) and 2016 No. 1107 (Equipment for Use in Potentially Explosive Atmospheres). The relevant Declaration of Conformity is available here [https://memolub.eu/assets/uploads/Support/EM/DoC-UKCA-EM-2023.pdf].
	This product is compliant with customs union technical regulation TR CU 010/2011 (safety of machines and equipment) and TP TC 012/2011 (safety of equipment for use in explosive atmospheres). The relevant Declaration of Conformity is available here [https://memolub.eu/assets/uploads/Support/EM/DoC-EAC-EM-2023.pdf].
	The WEEE symbol is attached to the product in compliance with the EU directive 2012/19/EU on Waste Electrical and Electronic Equipment (WEEE). It is intended to deter the improper disposal of this product and to promote reuse and recycling.
	The packaging material can be recycled. Please arrange for the environmental appropriate disposal of the packaging.
	This product is compliant with EN IEC 600790-15 (nC IIC T6 Gc)
	This product is compliant with EN IEC 600790-15 (tc IIIC T85°C)