



EPS **EPS** PLUS

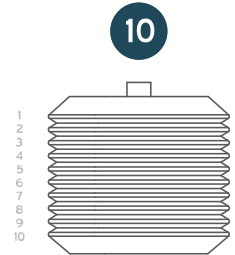
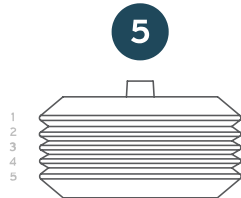
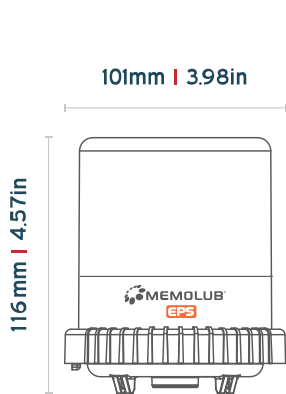
MEMOLUB EPS SERIES KNOWLEDGE BASE

Ref. IDs: 6020, 6021, 6022, 6027, 6820, 6821, 6822, 6808

DIMENSIONS

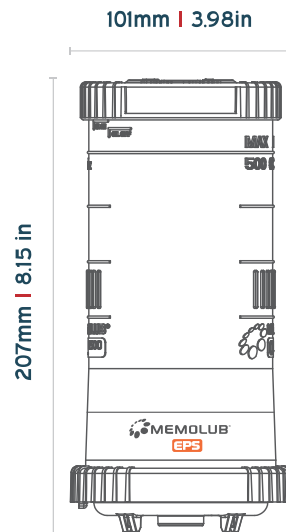
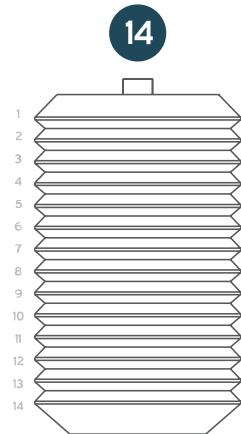
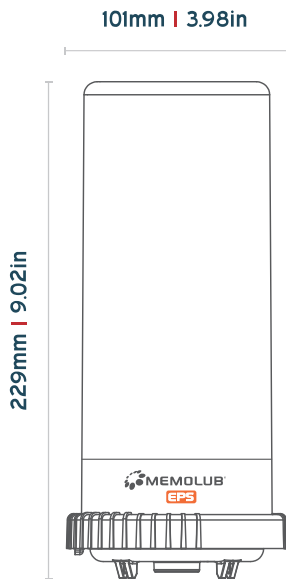
120cc
Grease & Oil Cartridges
120cc | 4oz

240cc
Grease & Oil Cartridges
240cc | 8.1oz



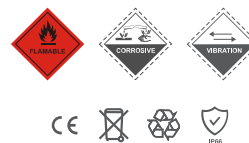
480cc
Grease & Oil Cartridges
480cc | 16.2oz

OIL R-500
Refillable Oil Reservoir
500ml | 16.9oz



PRECAUTIONS

- Do not open the housing: loaded spring
- Hold MEMOLUB EPS Series down during manual checks
- Leq <70 dB
- Use MEMOLUB EPS Series only for greasing machinery
- Use only lubricant cartridges and batteries recommended by the manufacturer



SETTINGS & INSTALLATION

SETTINGS

MEMO COLOR COMBINATION	DOSING PERIODICITY	MAX. DAILY OUTPUT*	REFILLING FREQUENCY VS. CARTRIDGE CONTENT (120CC)	REFILLING FREQUENCY VS. CARTRIDGE CONTENT (240CC)	REFILLING FREQUENCY VS. CARTRIDGE CONTENT (480CC)
○ + ○ + ○	1 hour	14.4 cm ³ /day	0.25 month	0.5 month	1 month
○ + ○	2 hours	7.2 cm ³ /day	0.5 month	1 month	2 months
○ + ○	6 hours	2.4 cm ³ /day	1.5 months	3 months	6 months
○	12 hours	1.2 cm ³ /day	3 months	6 months	12 months
○ + ○	16 hours	0.9 cm ³ /day	4 months	8 months	16 months
○	24 hours	0.6 cm ³ /day	6 months	12 months	24 months
○	48 hours	0.3 cm ³ /day	12 months	24 months	-

*Maximum daily output without stroke washers.

VOLUME SETTINGS [CC/DAY]

By using stroke washers you can adjust the amount of lubricant discharged per pumping cycle.

The brass adaptor is an extension of the MEMOLUB pump cylinder. One end features a short 1/4G thread, while the other has a longer M12x1.50 thread. The larger bore continues the pump cylinder and allows for the insertion of washers to adjust the piston stroke. This adjustment determines the volumetric setting of the MEMO.

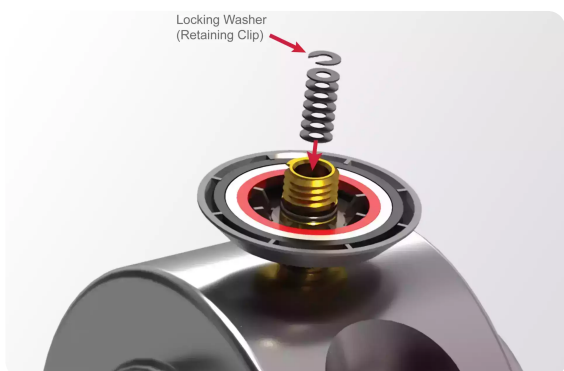
When used without any washers (full piston stroke), the MEMO delivers 0.6 cc of lubricant per stroke. Each washer added to the MEMO reduces the stroke volume by approximately 0.0375 cc. The open washer (clip) must be installed last to hold the other washers in place. A maximum of seven washers, including the open washer, can be installed in the MEMO.

NUMBER OF STROKE WASHERS*	MEMO RINGS COMBINATION						
	○ + ○ + ○	○ + ○	○ + ○	○	○ + ○	○	○
	14.4	7.2	2.4	1.2	0.9	0.6	0.3
○	13.5	6.75	2.25	1.13	0.84	0.56	0.28
○ + ○	12.6	6.3	2.1	1.05	0.79	0.53	0.26
2 ○ + ○	11.7	5.85	1.95	0.97	0.73	0.49	0.24
3 ○ + ○	10.8	5.4	1.8	-	0.68	0.45	0.22
4 ○ + ○	9.9	4.95	1.65	-	-	0.41	0.21
5 ○ + ○	9	4.5	1.5	-	-	0.38	0.19
6 ○ + ○	8.1	4.05	1.35	-	-	0.34	0.17

*The circlip must always be added on top of the washers

REMOTE INSTALLATION DISTANCES

TYPE OF INSTALLATION	MAXIMUM DISTANCE
Single point	8m
Multipoint	6m



SPECIFICATIONS

ELECTRIC SPECIFICATIONS

	MEMOLUB EPS	MEMOLUB EPS PLUS
Power Source	External Power Supply (min 15W - 0.6A)	
Voltage	24V DC	24V DC*
Short circuit protection	Yes	
Stroke duration	8 seconds	
Minimum stroke interval	15 minutes	

* The nominal input voltage may be adjusted within the 6-36VDC range upon request.



OTHER SPECIFICATIONS

	MEMOLUB EPS	MEMOLUB EPS PLUS
Temperature exposure range	-15°C to 50°C*	
Connections	1/4 BSP	
Lubricants	Oil and Grease (up to NLGI #2 with an oil base between 100 and 460 cSt)**	
Maximum Stroke Pressure	25 bar / 350 PSI	

* Lubricant adapted for low temperatures.

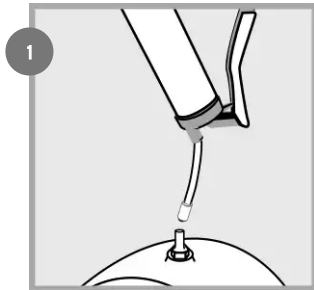
** For any other viscosity level please contact your local distributor.

STATUS LIGHTS

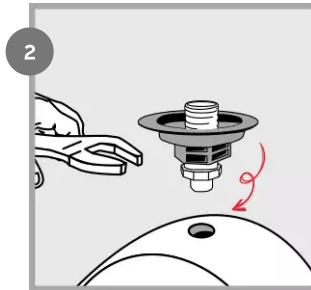
COLOR	MEMOLUB EPS	MEMOLUB EPS PLUS
	N/A	The pumping cycle ran successfully.
	N/A	Gearmotor damaged / Piston blocked.

INSTALLATION GUIDELINES

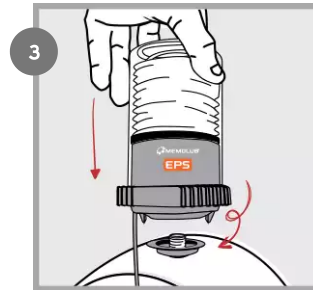
DIRECT INSTALLATION



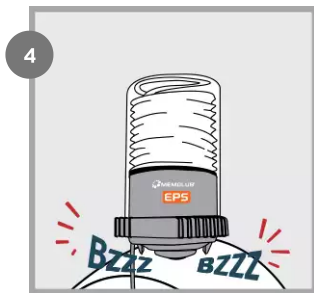
1 Prime lube point and remove nipple.



2 Install Memo on lube point using a strong threadlocker. Place the ring(s) in Memo according to "Settings" table above.

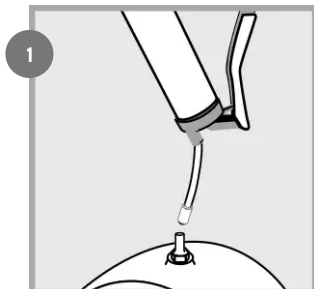


3 Install MEMOLUB EPS Series on Memo. Connect the cable to the 24V DC power supply.

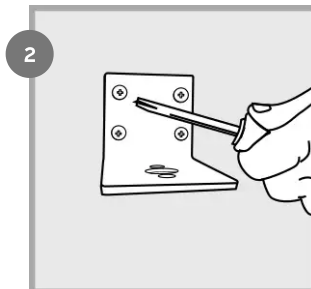


4 MEMOLUB EPS Series works immediately.

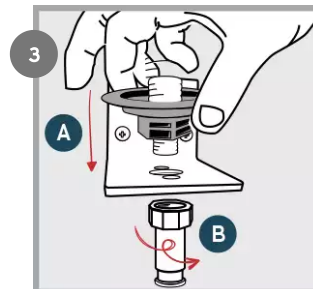
REMOTE INSTALLATION



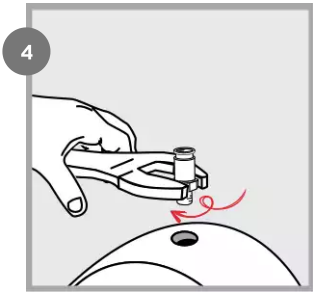
1 Prime lube point and remove nipple.



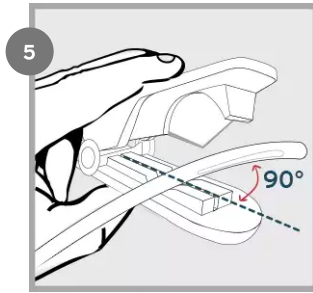
2 Secure the mounting bracket.



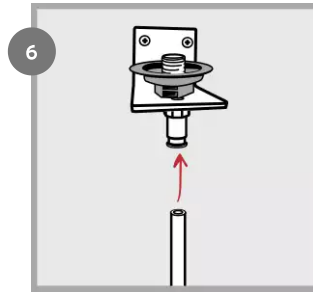
3 Install Memo and FI/4 fitting on bracket using a strong threadlocker. Place the ring(s) in Memo according to "Settings" table above.



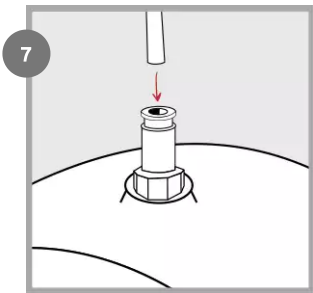
4 Screw BSP 1/8 fitting on lube point.



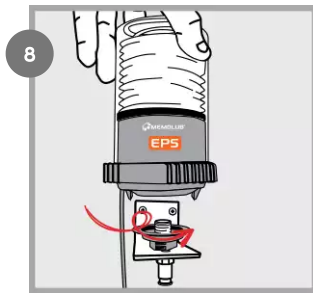
5 Cut hose to required size.



6 Insert hose into Memo's quick fitting.



7 Insert hose into lube point's quick fitting.

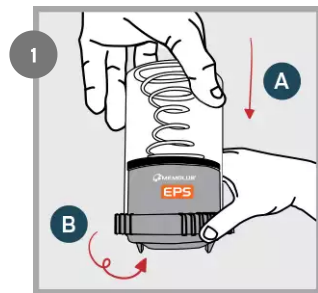


8 Install MEMOLUB EPS Series lubricator on Memo. Connect the cable to the 24V DC power supply.

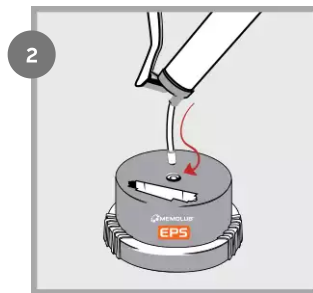


9 MEMOLUB EPS Series lubricator works immediately.

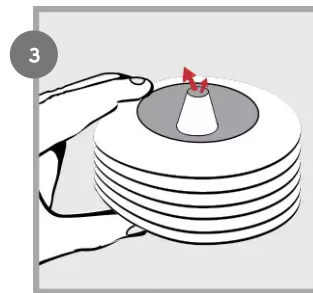
CARTRIDGE (RE)PLACEMENT GUIDELINES



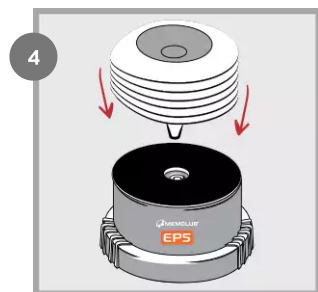
1 Open (fingers on ribs).
Remove the used cartridge, if any.



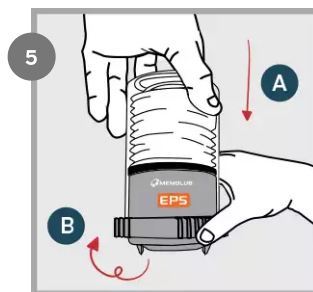
2 Prime the MEMOLUB EPS Series pump.



3 Squeeze air out of the cartridge.



4 Replace cartridge on the MEMOLUB EPS series pump.



5 Close and lock (fingers on ribs).

FAQ

How can I test and/or check if MEMOLUB EPS Series is functioning?

You can test and/or check whether the MEMOLUB EPS Series lubricator is working correctly at anytime by unscrewing the device from the MEMO by one turn and screwing it back. Your MEMOLUB EPS Series lubricator will expulse once after being mounted to the MEMO.

If the environment is too noisy, unscrew your MEMOLUB EPS Series lubricator from its MEMO and, push on one of the three switches at the bottom of the housing for a few seconds. The lubricator will then make an expulsion to confirm that electronic, mechanical and batteries are ok.

Operate this operation three times pushing each switch at least once to ensure all three switches are operational and the complete gavage of the pump with the adequate lubricant. This operation has to be done with a cartridge inside the MEMOLUB EPS Series lubricator.

What to do if my MEMOLUB EPS Series automatic lubricator is not functioning?

Make a manual test of your MEMOLUB EPS lubricator by using a MEMO with the three rings in the ring-holder.

If your MEMOLUB EPS Series lubricator does not work, check the following:

- Is the power supply ON?
- Does the power supply voltage have the right amplitude (24V DC) and polarity (brown=positive, blue=negative) ?
- Is there any discontinuity in the wiring?
- Are there one or more plastic rings inside the ring-holder? If not, no switch will be activated and the MEMOLUB EPS Series lubricator will not work. Make sure you insert them correctly as explained in the installation guidelines.

What to do when there is no lubricant coming out of my MEMOLUB EPS Series lubricator?

If MEMOLUB EPS does function, but no grease comes out of the automatic lubricator check the following:

- Is there a lubricant cartridge inside the MEMOLUB EPS? If not, recharge the unit with a cartridge as described in the installation guidelines.
- Was the spring mounted correctly inside the transparent housing? If not, please mount it again as described in the installation guidelines.
- Is the pump of the MEMOLUB EPS primed? If the cartridge of MEMOLUB EPS was totally emptied before replacement, some air could have been sucked into the system and the pump would cavitate for a certain number of cycles. Place a grease handgun on the suction valve of the red housing and pump grease through the unit as explained in the installation guidelines.

What to do when the lubricant cartridge is not emptied correctly?

If MEMOLUB EPS does function but the lubricant cartridge does not empty or not in the predicted timing there might be that of the following issues occurs:

- The piping is clogged: use a handgun to clear the pipes.
- One of the outlets of the distributor block has been voluntarily obstructed. Use bridging elements to reduce the number of outlets of a distributor block.
- The piping is damaged. Replace the piping.
- Counter pressure at the MEMOLUB EPS outlet is higher than 13 bar: please respect the tubing diameters, tubing lengths, the number of outlets per distribution block and the working temperatures. Also, use fittings with openings larger than 4mm (0.157").
- At working temperature, the base oil viscosity of the grease is higher than 10.000cSt. Please use low temperature lubricants.

What to do when the lubricant does not reach the lubrication point?






MEMOLUB EPS does function and empties correctly, however no lubricant is reaching the lubrication point. Possible causes are:

- The piping might be damaged, please check and replace if necessary.
- A fitting is not correctly screwed or sealing is missing, please check and replace or add if necessary.

Does my MEMOLUB EPS Series lubricator need specific maintenance?

The MEMOLUB EPS Series does not require any specific maintenance. When used in humid or dusty atmospheres MEMOLUB EPS Series can be cleaned with compressed air or a slightly humid rag. To clean MEMOLUB EPS do not use solvents or plunge unit in any liquid. It is also possible to equip your MEMOLUB EPS Series lubricator with a [protection cover](#). For additional information, please contact your local MEMOLUB dealer.

REGULATORY INFORMATION

SYMBOL	DESCRIPTION
	This product is compliant with Directives 2006/42/EC (Machinery). The relevant Declaration of Conformity is available here [https://memolub.eu/assets/uploads/Support/EPS/DoC-CE-EPS-2023.pdf].
	This product is compliant with UK regulations 2008 No. 1597 (Supply of Machinery). The relevant Declaration of Conformity is available here [https://memolub.eu/assets/uploads/Support/EPS/DoC-UKCA-EPS-2023_2023-06-02-144148_owcm.pdf].
	This product is compliant with customs union technical regulation TR CU 010/2011 (safety of machines and equipment). The relevant Declaration of Conformity is available here [https://memolub.eu/assets/uploads/Support/EPS/DoC-EAC-EPS-2023.pdf].
	The WEEE symbol is attached to the product in compliance with the EU directive 2012/19/EU on Waste Electrical and Electronic Equipment (WEEE). It is intended to deter the improper disposal of this product and to promote reuse and recycling.
	The packaging material can be recycled. Please arrange for the environmental appropriate disposal of the packaging.