



EPS
MEMOLUB® EPS
 KNOWLEDGE BASE

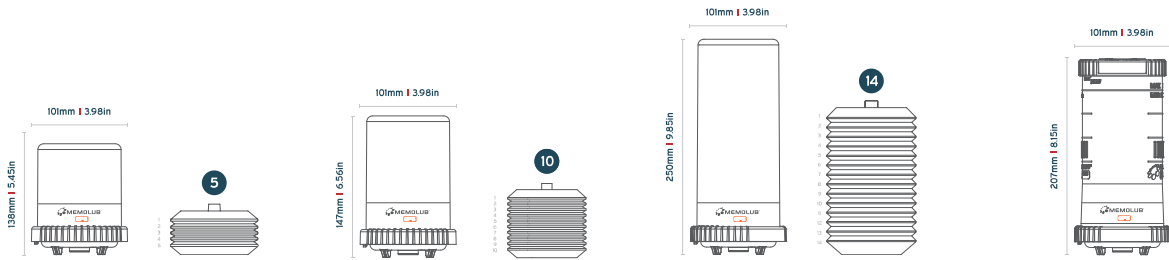
DIMENSIONS

Standard
 120cc | 4oz

Mega
 240cc | 8.1oz

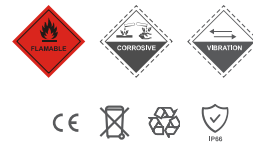
Giga
 480cc | 16.2oz

OIL R-500
 500cc | 16.9oz



PRECAUTIONS

- Do not open the housing: loaded spring
- Hold MEMOLUB® down during manual checks
- Leq <70 dB
- Use MEMOLUB® only for greasing machinery
- Use only lubricant cartridges and batteries recommended by the manufacturer



INSIDE THE BOX



MEMOLUB® EPS Pump



MEMOLUB® Housing Kit



MEMOLUB® EPS Memo Kit

SETTINGS & INSTALLATION

SETTINGS

MEMO COLOR COMBINATION	DOSING PERIODICITY	MAX. DAILY OUTPUT*	REFILLING FREQUENCY VS. CARTRIDGE CONTENT (120CC)	REFILLING FREQUENCY VS. CARTRIDGE CONTENT (240CC)	REFILLING FREQUENCY VS. CARTRIDGE CONTENT (480CC)
○ + ○ + ○	1 hour	14.4 cm ³ /day	0.25 month	0.5 month	1 month
○ + ○	3 hours	7.2 cm ³ /day	0.5 month	1 month	2 months
○ + ○	6 hours	2.4 cm ³ /day	1.5 months	3 months	6 months
○	12 hours	1.2 cm ³ /day	3 months	6 months	12 months
○ + ○	16 hours	0.9 cm ³ /day	4 months	8 months	16 months
○	24 hours	0.6 cm ³ /day	6 months	12 months	24 months
○	48 hours	0.3 cm ³ /day	12 months	24 months	-

*Maximum daily output without stroke washers.

VOLUME SETTINGS [CC/DAY]

By using stroke washers you can adjust the amount of lubricant discharged per pumping cycle.

NUMBER OF STROKE WASHERS*	MEMO RINGS COMBINATION						
	○ + ○ + ○	○ + ○	○ + ○	○	○ + ○	○	○
	14.4	7.2	2.4	1.2	0.9	0.6	0.3
⊕	13.5	6.75	2.25	1.13	0.84	0.56	0.28
⊙ + ⊕	12.6	6.3	2.1	1.05	0.79	0.53	0.26
2 ⊙ + ⊕	11.7	5.85	1.95	0.97	0.73	0.49	0.24
3 ⊙ + ⊕	10.8	5.4	1.8	-	0.68	0.45	0.22
4 ⊙ + ⊕	9.9	4.95	1.65	-	-	0.41	0.21
5 ⊙ + ⊕	9	4.5	1.5	-	-	0.38	0.19
6 ⊙ + ⊕	8.1	4.05	1.35	-	-	0.34	0.17

*The circlip must always be added on top of the washers

REMOTE INSTALLATION DISTANCES

TYPE OF INSTALLATION	MAXIMUM DISTANCE
Single point	8m

TYPE OF INSTALLATION	MAXIMUM DISTANCE
Multipoint	6m

SPECIFICATIONS

ELECTRIC SPECIFICATIONS

	MEMOLUB® EPS
Power Source	External Power Supply (min 15W - 0.6A)
Voltage	24V DC
Short circuit protection	Yes
Stroke duration	8 seconds
Minimum stroke interval	15 minutes

OTHER SPECIFICATIONS

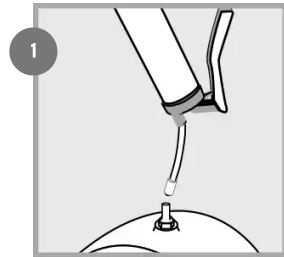
	MEMOLUB® EPS
Temperature exposure range	-15°C to 50°C*
Connections	1/4 BSP
Lubricants	Oil and Grease (up to NLGI #2 with an oil base between 100 and 460 cSt)**
Maximum Stroke Pressure	25 bar / 350 PSI

* Lubricant adapted for low temperatures.

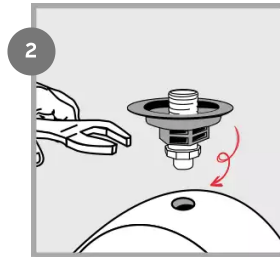
** For any other viscosity level please contact your local distributor.

INSTALLATION GUIDELINES

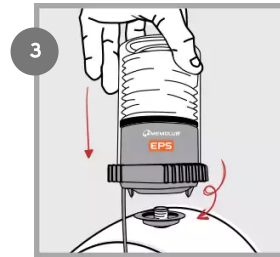
DIRECT INSTALLATION



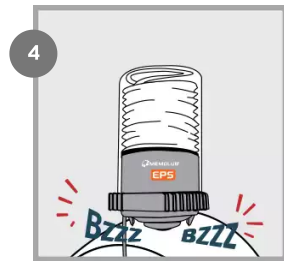
Prime lube point and remove nipple.



Install Memo on lube point using a strong threadlocker. Place the ring(s) in Memo according to "Settings" table above.

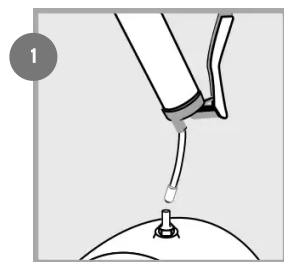


Install MEMOLUB® EPS on Memo. Connect the cable to the 24V DC power supply.

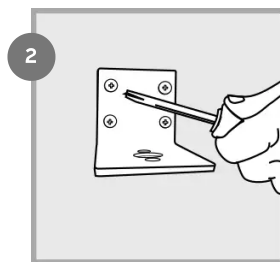


MEMOLUB® EPS works immediately.

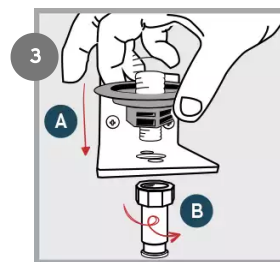
REMOTE INSTALLATION



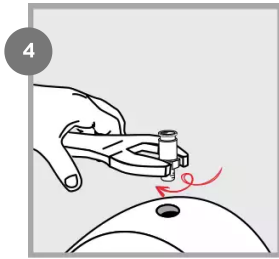
Prime lube point and remove nipple.



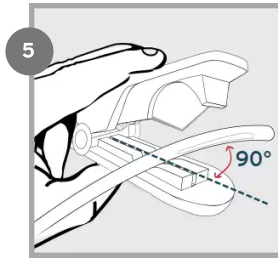
Secure the mounting bracket.



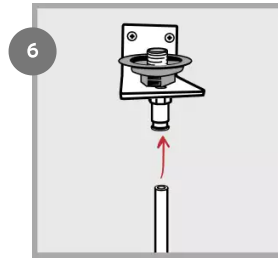
Install Memo and F1/4 fitting on bracket using a strong threadlocker. Place the ring(s) in Memo according to "Settings" table above.



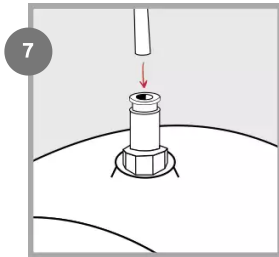
4 Screw BSP 1/8 fitting on lube point.



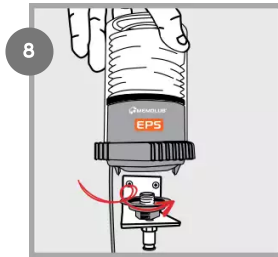
5 Cut hose to required size.



6 Insert hose into Memo's quick fitting.



7 Insert hose into lube point's quick fitting.

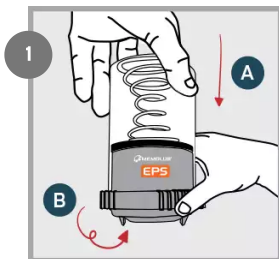


8 Install MEMOLUB® EPS on Memo. Connect the cable to the 24V DC power supply.

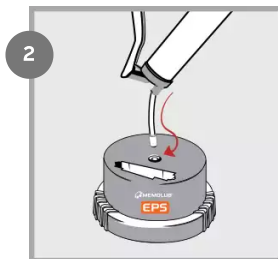


9 MEMOLUB® EPS works immediately.

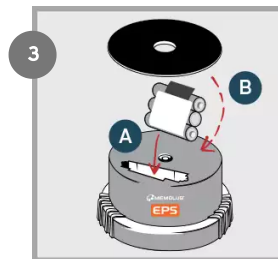
CARTRIDGE REPLACEMENT GUIDELINES



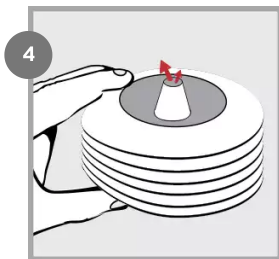
1 Open (fingers on ribs).



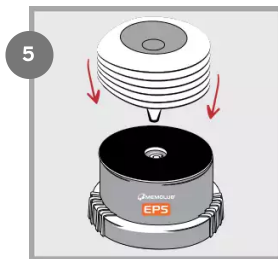
2 Prime MEMOLUB® EPS pump.



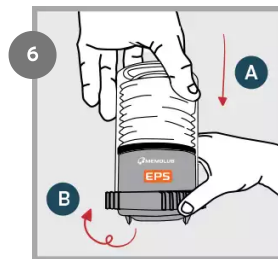
3 Insert new battery pack and seal. NOTE: the battery seal can be removed for 480cc cartridges.



4 Squeeze air out of the cartridge.



5 Replace cartridge on MEMOLUB® EPS pump.



6 Close and lock (fingers on ribs).

FAQ

How can I test and/or check if MEMOLUB® EPS is functioning?

You can test and/or check whether MEMOLUB® EPS is working correctly at anytime by unscrewing MEMOLUB® from the MEMO by one turn and screwing it back. MEMOLUB® EPS will expulse once after being mounted to the MEMO.

If the environment is too noisy, unscrew MEMOLUB® EPS from its MEMO and, push on one of the three switches at the bottom of the housing for a few seconds. MEMOLUB® EPS will then make an expulsion to confirm that electronic, mechanical and batteries are ok.

Operate this operation three times pushing each switch at least once to ensure all three switches are operational and the complete gavage of the pump with the adequate lubricant. This operation has to be done with a cartridge inside the MEMOLUB® EPS.

What to do if my MEMOLUB® EPS automatic lubricator is not functioning?

Make a manual test of MEMOLUB® EPS by using a MEMO with the three rings in the ring-holder.

If MEMOLUB® EPS does not work, check the following:

- Is the power supply ON?
- Does the power supply voltage have the right amplitude (24V DC) and polarity (brown=positive, blue=negative) ?
- Is there any discontinuity in the wiring?
- Are there one or more plastic rings inside the ring-holder? If not, no switch will be activated and MEMOLUB® EPS will not work. Make sure you insert them correctly as explained in the installation guidelines.

What to do when there is no lubricant coming out of my MEMOLUB® EPS?

If MEMOLUB® EPS does function, but no grease comes out of the automatic lubricator check the following:

- Is there a lubricant cartridge inside the MEMOLUB® EPS? If not, recharge the unit with a cartridge as described in the installation guidelines.
- Was the spring mounted correctly inside the transparent housing? If not, please mount it again as described in the installation guidelines.
- Is the pump of the MEMOLUB® EPS primed? If the cartridge of MEMOLUB® EPS was totally emptied before replacement, some air could have been sucked into the system and the pump would cavitate for a certain number of cycles. Place a grease handgun on the suction valve of the red housing and pump grease through the unit as explained in the installation guidelines.

What to do when the lubricant cartridge is not emptied correctly?

If MEMOLUB® EPS does function but the lubricant cartridge does not empty or not in the predicted timing there might be that of the following issues occurs:

- The piping is clogged: use a handgun to clear the pipes.

- One of the outlets of the distributor block has been voluntarily obstructed. Use bridging elements to reduce the number of outlets of a distributor block.
- The piping is damaged. Replace the piping.
- Counter pressure at the MEMOLUB® EPS outlet is higher than 13 bar: please respect the tubing diameters, tubing lengths, the number of outlets per distribution block and the working temperatures. Also, use fittings with openings larger than 4mm (0.157").
- At working temperature, the base oil viscosity of the grease is higher than 10.000cSt. Please use low temperature lubricants.

What to do when the lubricant does not reach the lubrication point?






MEMOLUB® EPS does function and empties correctly, however no lubricant is reaching the lubrication point. Possible causes are:

- The piping might be damaged, please check and replace if necessary.
- A fitting is not correctly screwed or sealing is missing, please check and replace or add if necessary.

Does MEMOLUB® EPS needs specific maintenance?

MEMOLUB® does not require any specific maintenance. When used in humid or dusty atmospheres MEMOLUB® EPS can be cleaned with compressed air or a slightly humid rag. To clean MEMOLUB® EPS do not use solvents or plunge unit in any liquid. It is also possible to equip your MEMOLUB® EPS with a [protection cover](#). For additional information, please contact your local MEMOLUB® dealer.

REGULATORY INFORMATION

SYMBOL	DESCRIPTION
	This product is compliant with Directives 2006/42/EC (Machinery). The relevant Declaration of Conformity is available here [https://memolub.eu/assets/uploads/Support/EPS/DoC-CE-EPS-2023.pdf].
	This product is compliant with UK regulations 2008 No. 1597 (Supply of Machinery). The relevant Declaration of Conformity is available here [https://memolub.eu/assets/uploads/Support/EPS/DoC-UKCA-EPS-2023_2023-06-02-144148_owcm.pdf].
	This product is compliant with customs union technical regulation TR CU 010/2011 (safety of machines and equipment). The relevant Declaration of Conformity is available here [https://memolub.eu/assets/uploads/Support/EPS/DoC-EAC-EPS-2023.pdf].
	The WEEE symbol is attached to the product in compliance with the EU directive 2012/19/EU on Waste Electrical and Electronic Equipment (WEEE). It is intended to deter the improper disposal of this product and to promote reuse and recycling.
	The packaging material can be recycled. Please arrange for the environmental appropriate disposal of the packaging.