



HPS **HPS** PLUS **HPS** BLUE

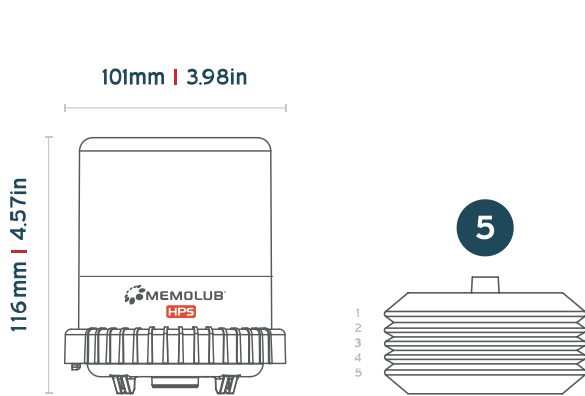
MEMOLUB HPS SERIES

SUPPORT & KNOWLEDGE BASE

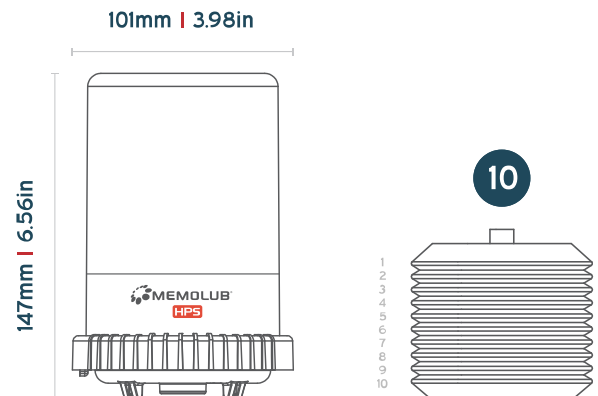
DIMENSIONS

120cc
Grease & Oil Cartridges

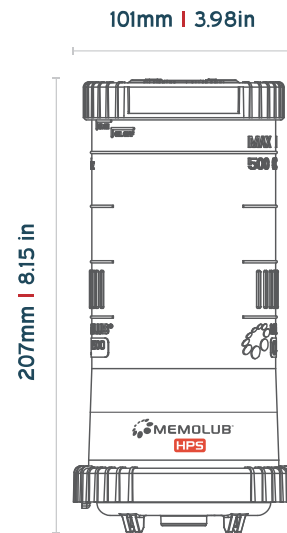
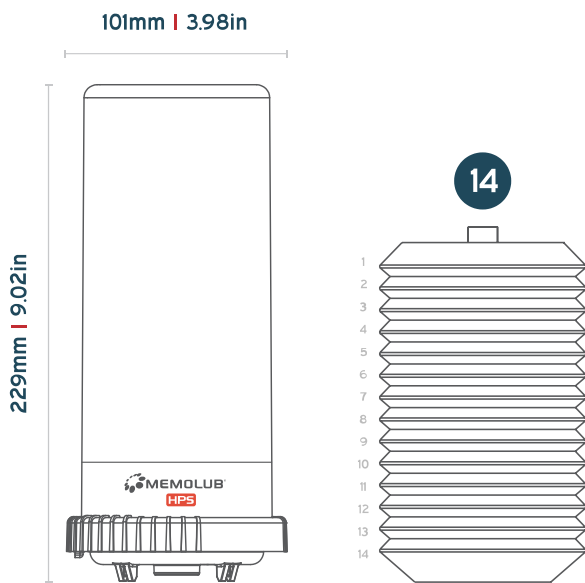
240cc
Grease & Oil Cartridges



480cc
Grease & Oil Cartridges

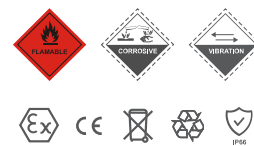


OIL R-500
Refillable Oil Reservoir



PRECAUTIONS

- Do not open the housing: loaded spring
- Hold MEMOLUB down during manual checks
- Leq <70 dB
- Use MEMOLUB only for greasing machinery
- Use only lubricant cartridges and batteries recommended by the manufacturer



SETTINGS

FREQUENCY SETTINGS

HPS, HPS PLUS					
MEMO COLOR COMBINATION	DOSING PERIODICITY	MAX. DAILY OUTPUT*	REFILLING FREQUENCY VS. CARTRIDGE CONTENT (120CC)	REFILLING FREQUENCY VS. CARTRIDGE CONTENT (240CC)	REFILLING FREQUENCY VS. CARTRIDGE CONTENT (480CC)
○ + ○ + ○	1 hour	14.4 cm ³ /day	0.25 month	0.5 month	1 month
○ + ○	2 hours	7.2 cm ³ /day	0.5 month	1 month	2 months
○ + ○	6 hours	2.4 cm ³ /day	1.5 months	3 months	6 months
○	12 hours	1.2 cm ³ /day	3 months	6 months	12 months
○ + ○	16 hours	0.9 cm ³ /day	4 months	8 months	16 months
○	24 hours	0.6 cm ³ /day	6 months	12 months	-
○	48 hours	0.3 cm ³ /day	12 months		

*Maximum daily output without stroke washers.

HPS BLUE					
	DOSING PERIODICITY	MAX. DAILY OUTPUT*	REFILLING FREQUENCY VS. CARTRIDGE CONTENT (120CC)	REFILLING FREQUENCY VS. CARTRIDGE CONTENT (240CC)	REFILLING FREQUENCY VS. CARTRIDGE CONTENT (480CC)
	1 hour	14.4 cm ³ /day	0.25 month	0.5 month	1 month
	2 hours	7.2 cm ³ /day	0.5 month	1 month	2 months
	6 hours	2.4 cm ³ /day	1.5 months	3 months	6 months
	12 hours	1.2 cm ³ /day	3 months	6 months	12 months
	16 hours	0.9 cm ³ /day	4 months	8 months	16 months
	24 hours	0.6 cm ³ /day	6 months	12 months	-
	48 hours	0.3 cm ³ /day	12 months		
	Custom**	57,6cm ³ /day***			

*Maximum daily output without stroke washers.

** Value to be set as minutes in the app. Example: 1h30 = 90 minutes.

***A stroke interval of minimum 15 minutes is recommended.

VOLUME SETTINGS [CC/DAY]

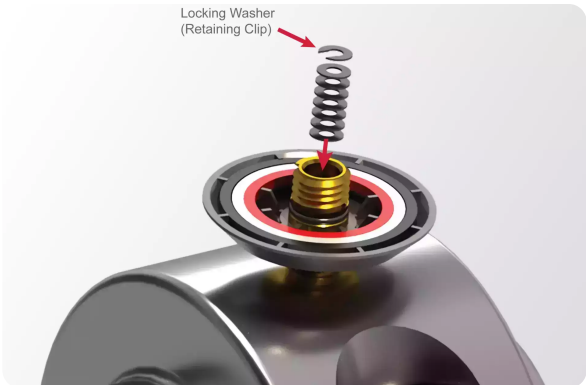
The brass adaptor is an extension of the MEMOLUB pump cylinder. One end features a short 1/4G thread, while the other has a longer M12x1.50 thread. The larger bore continues the pump cylinder and allows for the insertion of washers to adjust the piston stroke. This adjustment determines the volumetric setting of the MEMO.

When used without any washers (full piston stroke), the MEMO delivers 0.6 cc of lubricant per stroke. Each washer added to the MEMO reduces the stroke volume by approximately 0.0375 cc. The open washer (clip) must be installed last to hold the other washers in place. A maximum of seven washers, including the open washer, can be installed in the MEMO.

NUMBER OF STROKE WASHERS*	MEMO RINGS COMBINATION						
	○ + ○ + ○	○ + ○	○ + ○	○	○ + ○	○	○
	14.4 cm ³	7.2 cm ³	2.4 cm ³	1.2 cm ³	0.9 cm ³	0.6 cm ³	0.3 cm ³
○	13.5 cm ³	6.75 cm ³	2.25 cm ³	1.13 cm ³	0.84 cm ³	0.56 cm ³	0.28 cm ³
○ + ○	12.6 cm ³	6.3 cm ³	2.1 cm ³	1.05 cm ³	0.79 cm ³	0.53 cm ³	0.26 cm ³
2 ○ + ○	11.7 cm ³	5.85 cm ³	1.95 cm ³	0.97 cm ³	0.73 cm ³	0.49 cm ³	0.24 cm ³
3 ○ + ○	10.8 cm ³	5.4 cm ³	1.8 cm ³	-	0.68 cm ³	0.45 cm ³	0.22 cm ³
4 ○ + ○	9.9 cm ³	4.95 cm ³	1.65 cm ³	-	-	0.41 cm ³	0.21 cm ³
5 ○ + ○	9 cm ³	4.5 cm ³	1.5 cm ³	-	-	0.38 cm ³	0.19 cm ³
6 ○ + ○	8.1 cm ³	4.05 cm ³	1.35 cm ³	-	-	0.34 cm ³	0.17 cm ³

*The circlip must always be added on top of the washers

MEMO INSTALLATION GUIDE



INSTALLATION

REMOTE INSTALLATION DISTANCES

TYPE OF INSTALLATION	MAXIMUM DISTANCE
Single point	8m
Multipoint	6m

SPECIFICATIONS

GENERAL

	MEMOLUB HPS	MEMOLUB HPS PLUS	MEMOLUB HPS BLUE
Power Source	Battery		
Voltage	4.5V DC (3x1.5V DC AA)		
Short circuit protection	Yes		
Stroke duration	8 seconds		
Minimum stroke interval	1 hour		15 minutes
Communication	-		Short Range, Wireless




OTHER

	MEMOLUB HPS	MEMOLUB HPS PLUS	MEMOLUB HPS BLUE
Temperature exposure range	-15°C to 50°C*		
Connections	1/4 BSP		
Lubricants	Oil and Grease (up to NLGI #2 with an oil base between 100 and 460 cSt)**		
Maximum Stroke Pressure	25 bar / 350 PSI		

* Batteries + lubricant adapted for low temperatures.

** For any other viscosity level please contact your local distributor.

STATUS LIGHTS

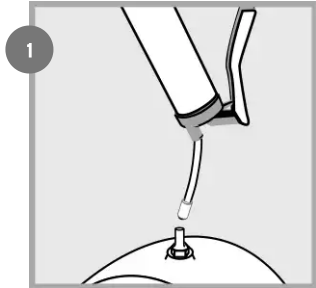
COLOR	MEMOLUB HPS	MEMOLUB HPS PLUS	MEMOLUB HPS BLUE
	N/A	The pumping cycle ran successfully	
	N/A	The gearmotor is damaged or broken/ Battery low.	
	N/A		Connection established.

BLUETOOTH CONNECTIVITY

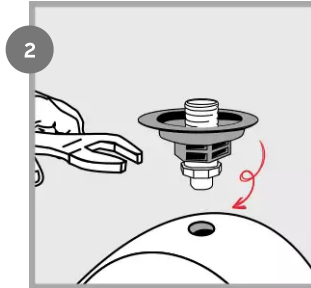
	MEMOLUB HPS	MEMOLUB HPS PLUS	MEMOLUB HPS BLUE
Version	-		5.2
Frequency	-		2,4 GHz
Range (indoor, office environment)	-		30m
Range (outdoor, line of sight)	-		150m

INSTALLATION GUIDELINES

DIRECT INSTALLATION (HPS, HPS PLUS)



1 Prime lube point and remove nipple.



2 Install Memo on lube point.

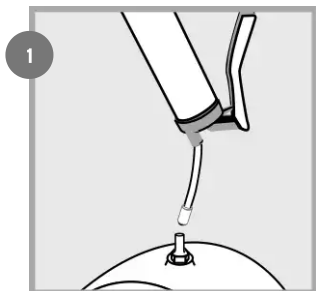


3 Install MEMOLUB HPS on Memo.

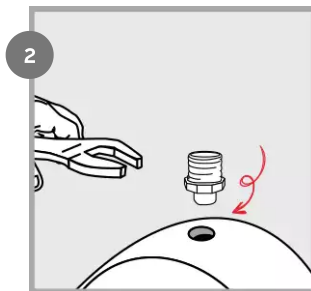


4 MEMOLUB HPS works immediately.

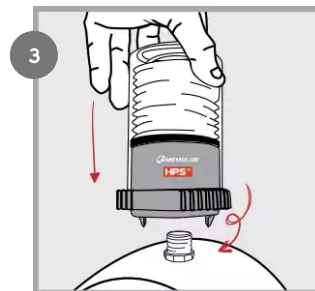
DIRECT INSTALLATION (HPS BLUE)



1 Prime lube point and remove nipple.



2 Install brass fitting on lube point.

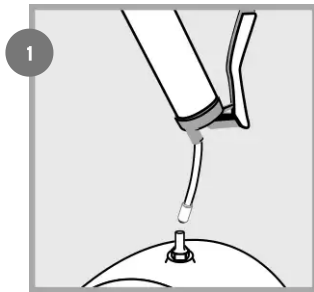


3 Install MEMOLUB HPS BLUE on the brass fitting.

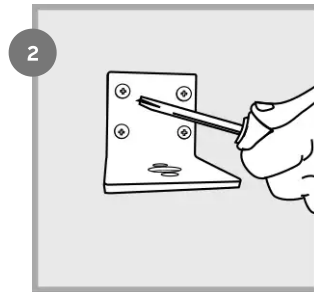


Setup using the MEMOLUB App, Memolub HPS works immediately

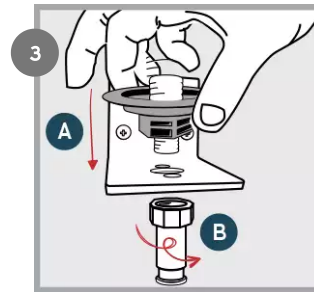
REMOTE INSTALLATION (HPS, HPS PLUS)



Prime lube point and remove nipple.



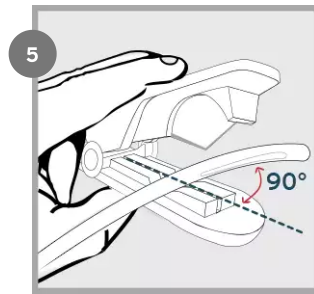
Secure the mounting bracket.



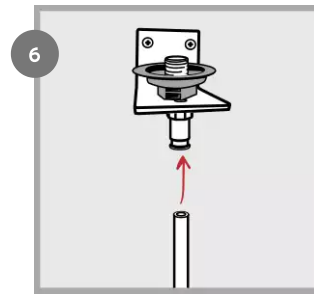
Install the base and F1/4 fitting on bracket using a strong threadlock.



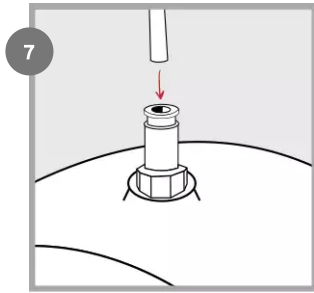
Screw BSP 1/8 fitting on lube point.



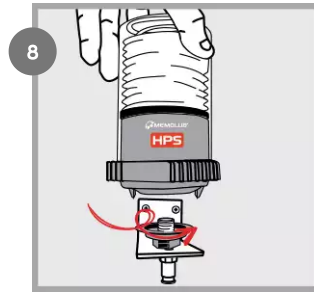
Cut hose to required size.



Insert hose into the bracket quick fitting.



7 Insert hose into the lube point quick fitting.

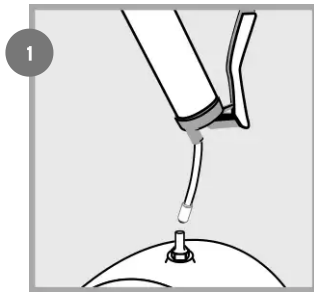


8 Install MEMOLUB HPS on Memo.

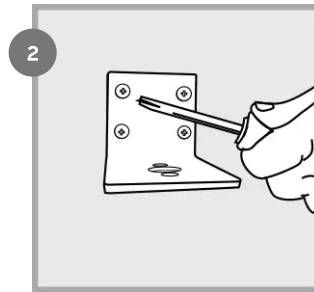


9 MEMOLUB HPS works immediately.

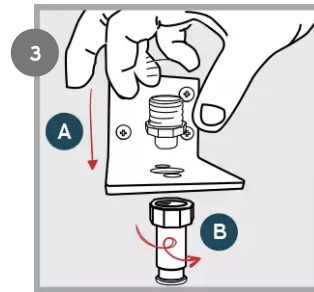
REMOTE INSTALLATION (HPS BLUE)



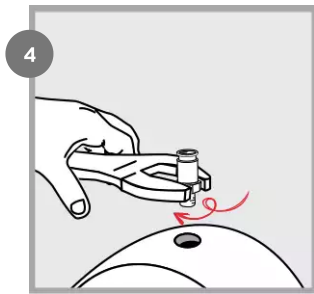
1 Prime lube point and remove nipple.



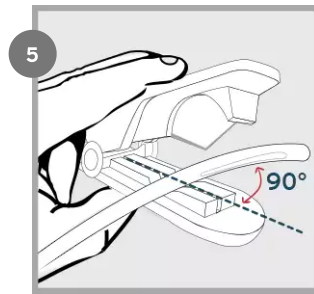
2 Secure the mounting bracket.



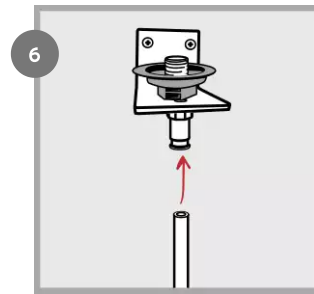
3 Install the base and F1/4 fitting on bracket using a strong threadlock.



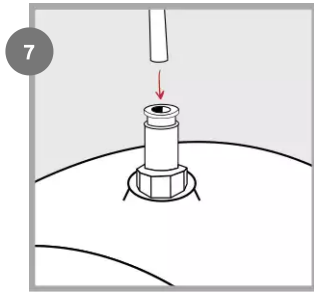
4 Screw BSP 1/8 fitting on lube point.



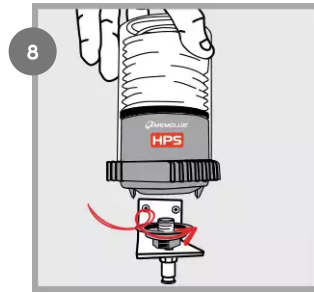
5 Cut hose to required size.



6 Insert hose into the bracket quick fitting.



7 Insert hose into the lube point quick fitting.

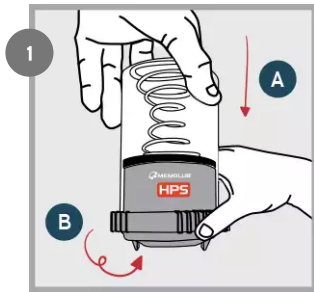


8 Install MEMOLUB HPS on Memo.

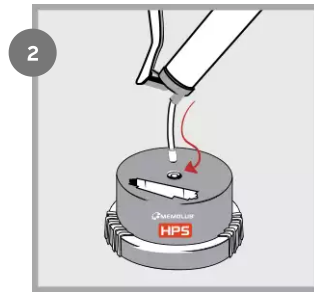


9 MEMOLUB HPS works immediately.

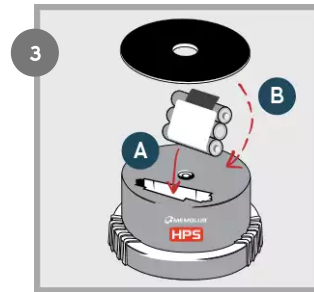
CARTRIDGE (RE)PLACEMENT GUIDELINES



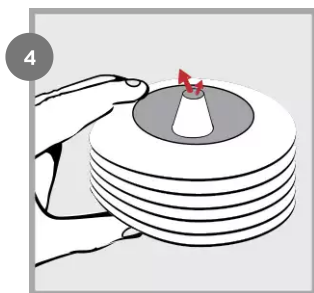
1 Open (fingers on ribs). Remove the used cartridge, if any.



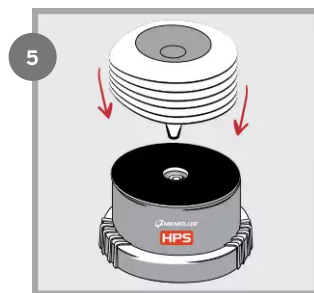
2 Prime MEMOLUB HPS pump.



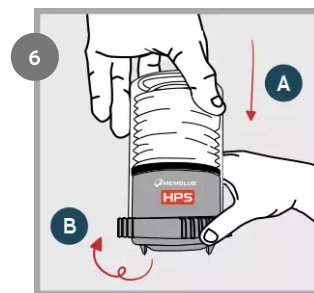
3 Insert new battery pack and seal. NOTE: the battery seal can be removed for 480cc cartridges.



4 Squeeze air out of the cartridge.



5 Replace cartridge on MEMOLUB HPS pump.



6 Close and lock (fingers on ribs).

FAQ

How can I test and/or check if MEMOLUB HPS is functioning?

You can test and/or check whether MEMOLUB HPS is working correctly at anytime by unscrewing MEMOLUB from the MEMO by one turn and screwing it back. MEMOLUB HPS will expulse once after being mounted to the MEMO.

If the environment is too noisy, unscrew MEMOLUB from its MEMO and, push on one of the three switches at the bottom of the housing for a few seconds. MEMOLUB will then make an expulsion to confirm that electronic, mechanical and batteries are ok.

Operate this operation three times pushing each switch at least once to ensure all three switches are operational and the complete gavage of the pump with the adequate lubricant. This operation has to be done with a cartridge inside the MEMOLUB HPS.

What to do if my MEMOLUB HPS Series automatic lubricator is not functioning?

Make a manual test of MEMOLUB HPS by using a MEMO with the three rings in the ring-holder.

If MEMOLUB HPS does not work, check the following:

- Is there a battery pack in the MEMOLUB and is it correctly inserted?
- Are the batteries ok? Use another battery pack to double-check.
- Are there one or more plastic rings inside the ring-holder? If not, no switch will be activated and MEMOLUB HPS will not work. Make sure you insert them correctly as explained in the installation guidelines.

What to do when there is no lubricant coming out of my MEMOLUB HPS?

If MEMOLUB HPS does function, but no grease comes out of the automatic lubricator check the following:

- Is there a lubricant cartridge inside the MEMOLUB HPS? If not, recharge the unit with a cartridge as described in the installation guidelines.
- Was the spring mounted correctly inside the transparent housing? If not, please mount it again as described in the installation guidelines.
- Is the pump of the MEMOLUB HPS primed? If the cartridge of MEMOLUB HPS was totally emptied before replacement, some air could have been sucked into the system and the pump would cavitate for a certain number of cycles. Place a grease handgun on the suction valve of the red housing and pump grease through the unit as explained in the installation guidelines.

What to do when the lubricant cartridge is not emptied correctly?

If MEMOLUB HPS does function but the lubricant cartridge does not empty or not in the predicted timing there might be that of the following issues occurs:

- The piping is clogged: use a handgun to clear the pipes.
- One of the outlets of the distributor block has been voluntarily obstructed. Use bridging elements to reduce the number of outlets of a distributor block.
- The piping is damaged. Replace the piping.
- Counter pressure at the MEMOLUB HPS outlet is higher than 20 bar: please respect the tubing diameters, tubing lengths, the number of outlets per distribution block and the working temperatures. Also, use fittings with openings larger than 4mm (0.157").

- At working temperature, the base oil viscosity of the grease is higher than 10.000cSt. Please use low temperature lubricants.

What to do when the lubricant does not reach the lubrication point?








MEMOLUB HPS does function and empties correctly, however no lubricant is reaching the lubrication point. Possible causes are:

- The piping might be damaged, please check and replace if necessary.
- A fitting is not correctly screwed or sealing is missing, please check and replace or add if necessary.

Does MEMOLUB HPS needs specific maintenance?

MEMOLUB does not require any specific maintenance. When used in humid or dusty atmospheres MEMOLUB HPS can be cleaned with compressed air or a slightly humid rag. To clean MEMOLUB HPS do not use solvents or plunge unit in any liquid. It is also possible to equip your MEMOLUB HPS with a [protection cover](#). For additional information, please contact your local MEMOLUB dealer.

REGULATORY INFORMATION

SYMBOL	DESCRIPTION
	This product is compliant with Directives 2006/42/EU (Machinery) and 2014/34/EU (Equipment in potentially explosives atmospheres - classification II 3 G for gases, II 3 D for dusts). The relevant Declaration of Conformity is available here [https://memolub.eu/assets/uploads/Support/HPS/DoC-CE-HPS-2023.pdf].
	This product is compliant with UK regulations 2008 No. 1597 (Supply of Machinery) and 2016 No. 1107 (Equipment for use in potentially explosive atmospheres). The relevant Declaration of Conformity is available here [https://memolub.eu/assets/uploads/Support/HPS/DoC-UKCA-HPS-2023.pdf].
	This product is compliant with customs union technical regulations TR CU 010/2011 (safety of machines and equipment) and TP TC 012/2011 (safety of equipment for use in explosive atmospheres). The relevant Declaration of Conformity is available here [https://memolub.eu/assets/uploads/Support/HPS/DoC-EAC-HPS-2023.pdf].
	The WEEE symbol is attached to the product in compliance with the EU directive 2012/19/EU on Waste Electrical and Electronic Equipment (WEEE). It is intended to deter the improper disposal of this product and to promote reuse and recycling.
	The packaging material can be recycled. Please arrange for the environmental appropriate disposal of the packaging.
	This product is compliant with EN IEC 600790-15 (nC IIC T6 Gc)
	This product is compliant with EN IEC 600790-31 (tc IIIC T85°C)

AT A GLANCE

Discover how the HPS series delivers precise, reliable lubrication for demanding applications. Download the brochure to explore the full range or read all about it on the HPS Series product page.

[PRODUCT INFO](#)

[BROCHURE](#)

