



ONE **ONE** PLUS

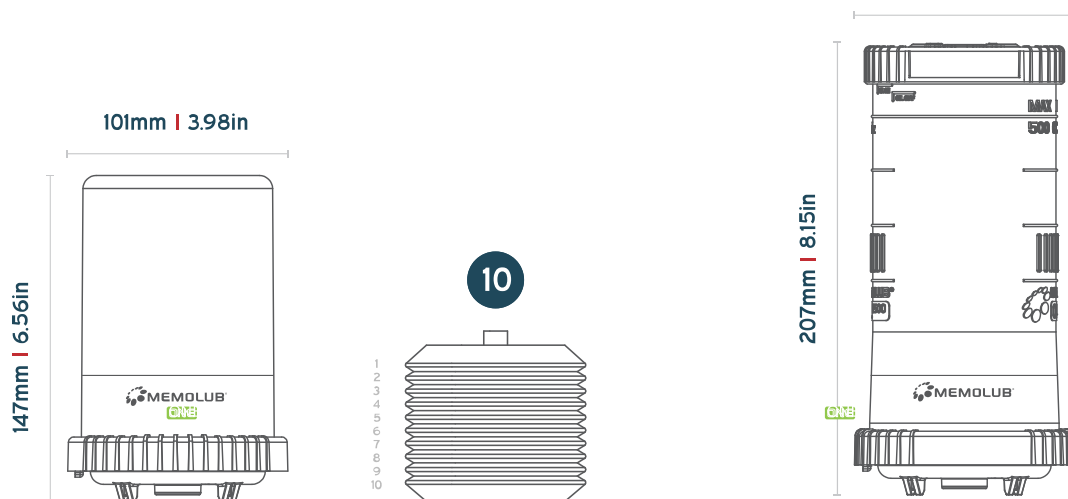
MEMOLUB ONE SERIES

KNOWLEDGE BASE

DIMENSIONS

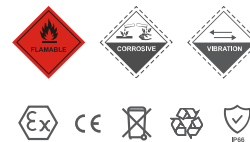
240cc
Grease & Oil Cartridges
240cc | 4oz

Oil R-500
Refillable Oil Reservoir
500cc | 16.9oz



PRECAUTIONS

- Do not open the housing: loaded spring
- Hold MEMOLUB® down during manual checks
- Leq <70 dB
- Use MEMOLUB® only for greasing machinery
- Use only lubricant cartridges and batteries recommended by the manufacturer



SETTINGS

SETTINGS

MEMO COLOR	AV. DAILY OUTPUT	REFILLING FREQUENCY VS. CARTRIDGE CONTENT
	0.6 cc/day	12 months
	1.2 cc/day	6 months
	2.4 cc/day	3 months
	7.2 cc/day	1 month

REMOTE INSTALLATION DISTANCES

TYPE OF INSTALLATION	MAXIMUM DISTANCE
Single point	2m

ELECTRIC SPECIFICATIONS

	Memolub ONE	M
Power Source	Battery	
Voltage	4.5V DC (3x1.5V DC AA)	
Short circuit protection	Yes	
Stroke duration	8 seconds	
Minimum stroke interval	15 minutes	



OTHERS

	Memolub ONE	M
Operating Temperature	-15°C to 50°C*	
Connections	1/4 BSP	
Lubricants	Oil and Grease (up to NLGI #2 with an oil base between 10C	
Maximum stroke pressure	10 bar / 240 PSI	

* Batteries + lubricant adapted for low temperatures.

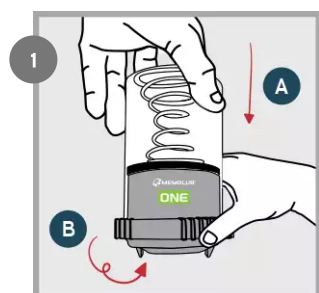
** For any other viscosity level please contact your local distributor.

STATUS LIGHTS

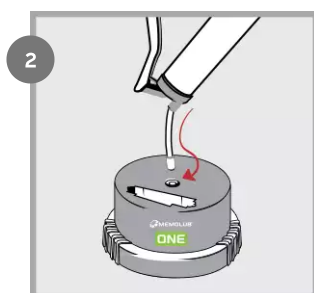
COLOR	Memolub ONE	M
	N/A	The pump
		The gearbox, Che

INSTALLATION GUIDELINES

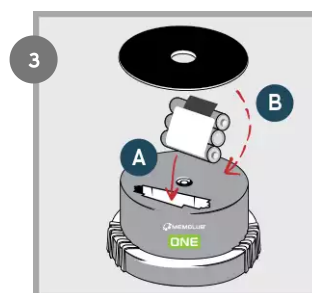
- DIRECT INSTALLATION
- REMOTE INSTALLATION



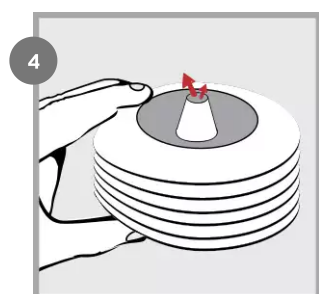
Open (fingers on ribs).



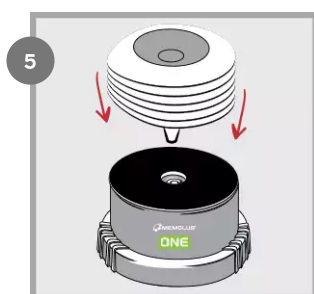
Prime the Memolub ONE Series pump.



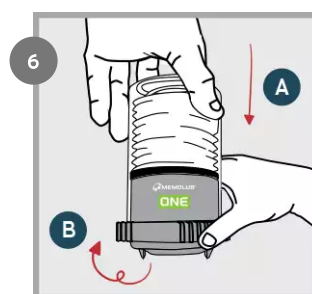
Replace battery pack and seal.



Squeeze air out of the cartridge.



Replace cartridge on Memolub ONE Series pump.



Close and lock (fingers on ribs).

FAQ

How can I test and/or check if Memolub ONE Series is functioning?

You can test and/or check whether MEMOLUB® ONE is working correctly at anytime by unscrewing Memolub ONE Series from the MEMO by one turn and screwing it back. Memolub ONE Series will expulse once after being mounted to the MEMO.

If the environment is too noisy, unscrew Memolub ONE Series from its MEMO and, push on one of the two switches at the bottom of the housing for a few seconds. Memolub ONE Series will then make an expulsion to confirm that electronic, mechanical and batteries are ok.

Operate this operation two times pushing each switch at least once to ensure all two switches are operational and the complete gavage of the pump with the adequate lubricant. This operation has to be done with a cartridge inside the Memolub ONE Series

What to do if my Memolub ONE Series automatic lubricator is not functioning?

Make a manual test of Memolub ONE Series by installing a MEMO on the Memolub ONE Series lubricator. If Memolub ONE Series does not work, check the following:

What to do when there is no lubricant coming out of my Memolub ONE Series?

If Memolub ONE Series does function, but no grease comes out of the automatic lubricator check the following:

- Is there a lubricant cartridge inside the Memolub ONE Series? If not, recharge the unit with a cartridge as described in the installation guidelines.
- Was the spring mounted correctly inside the transparent housing? If not, please mount it again as described in the installation guidelines.
- Is the pump of the Memolub ONE Series primed? If the cartridge of Memolub ONE Series was totally emptied before replacement, some air could have been sucked into the system and the pump would capitate for a certain number of cycles. Place a grease handgun on the suction valve of the red housing and pump grease through the unit as explained in the installation guidelines

What to do when the lubricant cartridge is not emptied correctly?

If Memolub ONE Series does function but the lubricant cartridge does not empty or not in the predicted timing there might be that of the following issues occurs:

- The piping is clogged: use a handgun to clear the pipes.
- The piping is damaged. Replace the piping.
- Counter pressure at the Memolub ONE Series outlet is higher than 10 bar: please respect the tubing diameters, tubing lengths, and the working temperatures. Also, use fittings with openings larger than 4mm (0.157").
- At working temperature, the base oil viscosity of the grease is higher than 10.000cSt. Please use low temperature lubricants.







What to do when the lubricant does not reach the lubrication point?

Memolub ONE Series does function and empties correctly, however no lubricant is reaching the lubrication point. Possible causes are:

- The piping might be damaged, please check and replace if necessary.
- A fitting is not correctly screwed or sealing is missing, please check and replace or add if necessary.

Does Memolub ONE Series needs specific maintenance?

Memolub ONE Series does not require any specific maintenance. When used in humid or dusty atmospheres Memolub ONE Series can be cleaned with compressed air or a slightly humid rag. To clean Memolub ONE Series do not use solvents or plunge unit in any liquid. It is also possible to equip your Memolub ONE Series with a protection cover. For additional information, please contact your local Memolub dealer.

SYMBOL	DESCRIPTION
	This product is compliant with Directives 2006/42/EU (Machinery) and 2014/34/EU (explosives atmospheres - classification II 3 G for gases, II 3 D for dusts). The Declaration of Conformity is available here
	This product is compliant with UK regulations 2008 No. 1597 (Supply of Machinery for use in potentially explosive atmospheres). The relevant Declaration of Conformity information is available here
	This product is compliant with customs union technical regulations TR CU 010/2011 (equipment) and TP TC 012/2011 (safety of equipment for use in explosive atmospheres). The Declaration of Conformity is available here
	The WEEE symbol is attached to the product in compliance with the EU directive on Waste Electrical and Electronic Equipment (WEEE). It is intended to deter the improper disposal of electrical and electronic equipment and recycling.
	The packaging material can be recycled. Please arrange for the environmental disposal of the packaging.
	This product is compliant with EN IEC 60079-15 (nc)
	This product is compliant with EN IEC 60079-31 (tc II)