



## ONE MEMOLUB® ONE KNOWLEDGE BASE

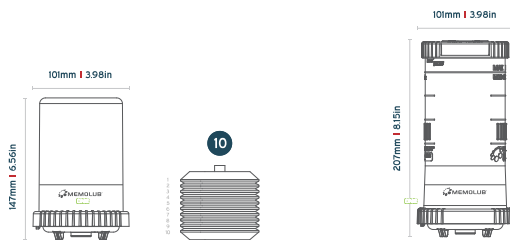
### DIMENSIONS

#### *Mega*

240cc | 4oz

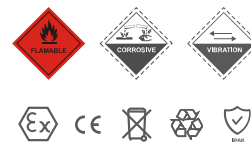
#### *Oil R-500*

500cc | 16.9oz



### PRECAUTIONS

- Do not open the housing: loaded spring
- Hold MEMOLUB® down during manual checks
- Leq <70 dB
- Use MEMOLUB® only for greasing machinery
- Use only lubricant cartridges and batteries recommended by the manufacturer



### INSIDE THE BOX



MEMOLUB® ONE Pump







MEMOLUB® Housing Kit



MEMOLUB® ONE Memo Kit

## SETTINGS

### SETTINGS

MEMO COLOR	AV. DAILY OUTPUT	REFILLING FREQUENCY VS. CARTRIDGE CONTENT (120CC)
	0.6 cc/day	12 months
	1.2 cc/day	6 months
	2.4 cc/day	3 months
	7.2 cc/day	1 month

### REMOTE INSTALLATION DISTANCES

TYPE OF INSTALLATION	MAXIMUM DISTANCE
Single point	2m

**SPECIFICATIONS**

**ELECTRIC SPECIFICATIONS**

	MEMOLUB® ONE
Power Source	Battery
Voltage	4.5V DC (3x1.5V DC AA)
Short circuit protection	Yes
Stroke duration	8 seconds
Minimum stroke interval	15 minutes

**OTHERS**

	MEMOLUB® ONE
Operating Temperature	-15°C to 50°C*

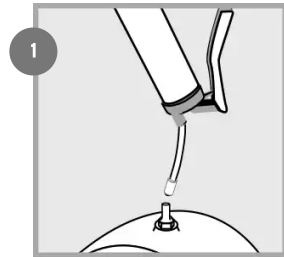
	MEMOLUB® ONE
Connections	1/4 BSP
Lubricants	Oil and Grease (up to NLGI #2 with an oil base between 100 and 460 cSt)**
Maximum stroke pressure	10 bar / 240 PSI

\* Batteries + lubricant adapted for low temperatures.

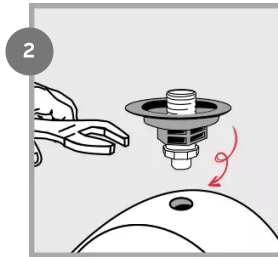
\*\* For any other viscosity level please contact your local distributor.

## INSTALLATION GUIDELINES

### DIRECT INSTALLATION



Prime lube point and remove nipple.



Choose ONE Memo according to "Settings" table above. Install ONE Memo on lube point using threadlocker (BSP 1/4).

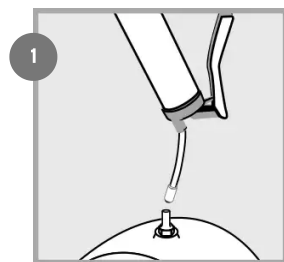


Install MEMOLUB® ONE on ONE Memo.

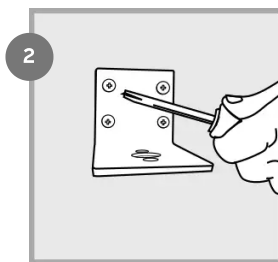


MEMOLUB® ONE works immediately.

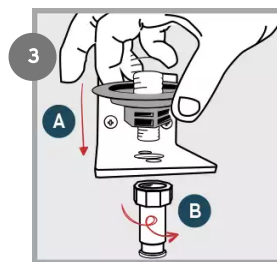
### REMOTE INSTALLATION



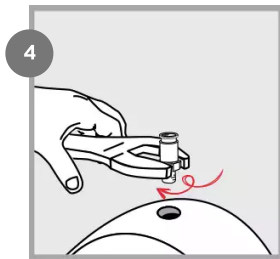
Prime lube point and remove nipple.



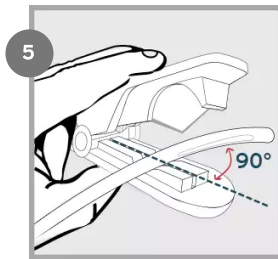
Secure the mounting bracket.



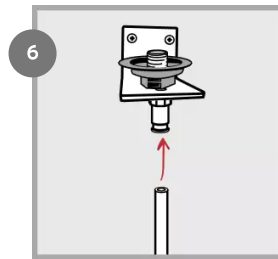
Choose the ONE Memo according to "Settings" table above. Install ONE Memo and F1/4 fitting on lube point using a strong threadlocker.



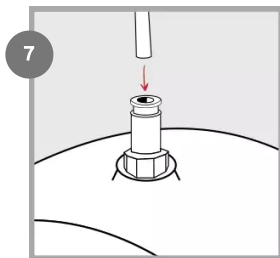
Install BSP 1/8 fitting on lube point.



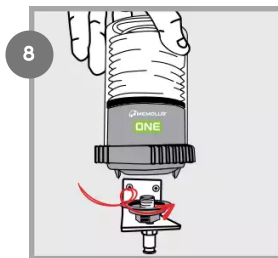
Cut hose to required size.



Insert hose into the bracket's quick fitting.



Insert hose into lube point's quick fitting.

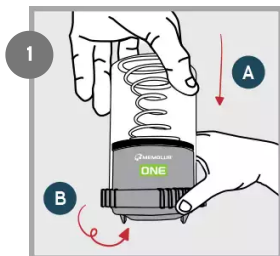


Install MEMOLUB® ONE on ONE Memo.

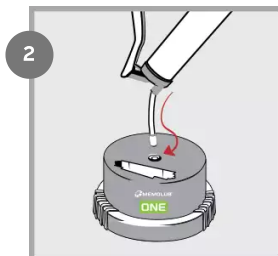


MEMOLUB® ONE works immediately.

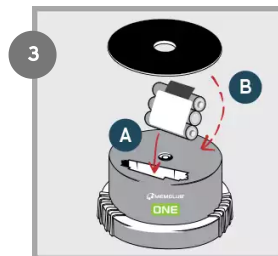
## **CARTRIDGE REPLACEMENT GUIDELINES**



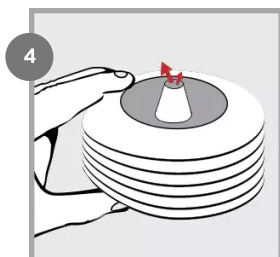
Open (fingers on ribs).



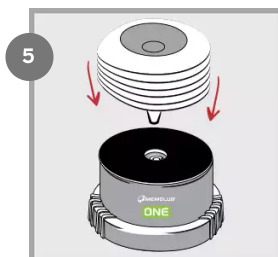
Prime MEMOLUB® ONE pump.



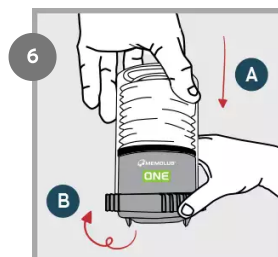
Replace battery pack and seal. NOTE: the battery seal may be removed for 480cc cartridges.



Squeeze air out of the cartridge.



Replace cartridge on MEMOLUB® ONE pump.



Close and lock (fingers on ribs).

## FAQ

### How can I test and/or check if MEMOLUB® ONE is functioning?

You can test and/or check whether MEMOLUB® ONE is working correctly at anytime by unscrewing MEMOLUB® from the MEMO by one turn and screwing it back. MEMOLUB® ONE will expulse once after being mounted to the MEMO.

If the environment is too noisy, unscrew MEMOLUB® from its MEMO and, push on one of the two switches at the bottom of the housing for a few seconds. MEMOLUB® will then make an expulsion to confirm that electronic, mechanical and batteries are ok.

Operate this operation two times pushing each switch at least once to ensure all two switches are operational and the complete gavage of the pump with the adequate lubricant. This operation has to be done with a cartridge inside the MEMOLUB® ONE

### What to do if my MEMOLUB® ONE automatic lubricator is not functioning?

Make a manual test of MEMOLUB® ONE by using a MEMO with the MEMOLUB® ONE

If MEMOLUB® ONE does not work, check the following:

- Is there a battery pack in the MEMOLUB® and is it correctly inserted?
- Are the batteries ok? Use another battery pack to double-check.

### What to do when there is no lubricant coming out of my MEMOLUB® ONE?

If MEMOLUB® ONE does function, but no grease comes out of the automatic lubricator check the following:

- Is there a lubricant cartridge inside the MEMOLUB® ONE? If not, recharge the unit with a cartridge as described in the installation guidelines.
- Was the spring mounted correctly inside the transparent housing? If not, please mount it again as described in the installation guidelines.
- Is the pump of the MEMOLUB® ONE primed? If the cartridge of MEMOLUB® ONE was totally emptied before replacement, some air could have been sucked into the system and the pump would cavitate for a certain number of cycles. Place a grease handgun on the suction valve of the red housing and pump grease through the unit as explained in the installation guidelines

### What to do when the lubricant cartridge is not emptied correctly?

If MEMOLUB® ONE does function but the lubricant cartridge does not empty or not in the predicted timing there might be that of the following issues occurs:

- The piping is clogged: use a handgun to clear the pipes.
- The piping is damaged. Replace the piping.
- Counter pressure at the MEMOLUB® ONE outlet is higher than 10 bar: please respect the tubing diameters, tubing lengths, and the working temperatures. Also, use fittings with openings larger than 4mm (0.157").

- At working temperature, the base oil viscosity of the grease is higher than 10.000cSt. Please use low temperature lubricants.

### What to do when the lubricant does not reach the lubrication point?








MEMOLUB® ONE does function and empties correctly, however no lubricant is reaching the lubrication point. Possible causes are:

- The piping might be damaged, please check and replace if necessary.
- A fitting is not correctly screwed or sealing is missing, please check and replace or add if necessary.

### Does MEMOLUB® ONE needs specific maintenance?

MEMOLUB® does not require any specific maintenance. When used in humid or dusty atmospheres MEMOLUB® ONE can be cleaned with compressed air or a slightly humid rag. To clean MEMOLUB® ONE do not use solvents or plunge unit in any liquid. It is also possible to equip your MEMOLUB® ONE with a protection cover. For additional information, please contact your local MEMOLUB® dealer.

## REGULATORY INFORMATION

SYMBOL	DESCRIPTION
	This product is compliant with Directives 2006/42/EU (Machinery) and 2014/34/EU (Equipment in potentially explosives atmospheres - classification II 3 G for gases, II 3 D for dusts). The relevant Declaration of Conformity and is available <a href="https://memolub.eu/assets/uploads/Support/One/DoC-CE-ONE-2023.pdf">here</a> [ <a href="https://memolub.eu/assets/uploads/Support/One/DoC-CE-ONE-2023.pdf">https://memolub.eu/assets/uploads/Support/One/DoC-CE-ONE-2023.pdf</a> ].
	This product is compliant with UK regulations 2008 No. 1597 (Supply of Machinery) and 2016 No. 1107 (Equipment for use in potentially explosive atmospheres). The relevant Declaration of Conformity and other regulatory information is available <a href="https://memolub.eu/assets/uploads/Support/One/DoC-UKCA-ONE-2023.pdf">here</a> [ <a href="https://memolub.eu/assets/uploads/Support/One/DoC-UKCA-ONE-2023.pdf">https://memolub.eu/assets/uploads/Support/One/DoC-UKCA-ONE-2023.pdf</a> ].
	This product is compliant with customs union technical regulations TR CU 010/2011 (safety of machines and equipment) and TP TC 012/2011 (safety of equipment for use in explosive atmospheres). The relevant Declaration of Conformity is available <a href="https://memolub.eu/assets/uploads/Support/One/DoC-EAC-ONE-2023.pdf">here</a> [ <a href="https://memolub.eu/assets/uploads/Support/One/DoC-EAC-ONE-2023.pdf">https://memolub.eu/assets/uploads/Support/One/DoC-EAC-ONE-2023.pdf</a> ].
	The WEEE symbol is attached to the product in compliance with the EU directive 2012/19/EU on Waste Electrical and Electronic Equipment (WEEE). It is intended to deter the improper disposal of this product and to promote reuse and recycling.
	The packaging material can be recycled. Please arrange for the environmental appropriate disposal of the packaging.
	This product is compliant with EN IEC 600790-15 (nC IIC T6 Gc)
	This product is compliant with EN IEC 600790-31 (tc IIIC T85°C)